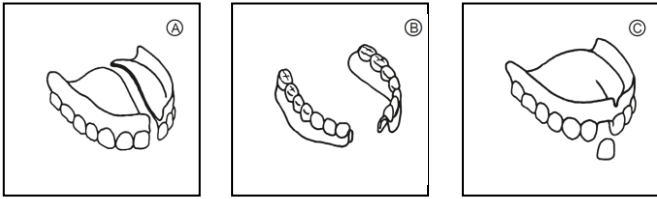


**Dr Denti SUPERFIX**  
**A do it yourself denture repair material**

**Indications**

Superfix is self-curing methyl methacrylate polymer for the repair of

- Broken upper hard acrylic dentures (A)
- Broken lower hard acrylic dentures (B)
- Dislodged acrylic denture teeth of full denture (C)



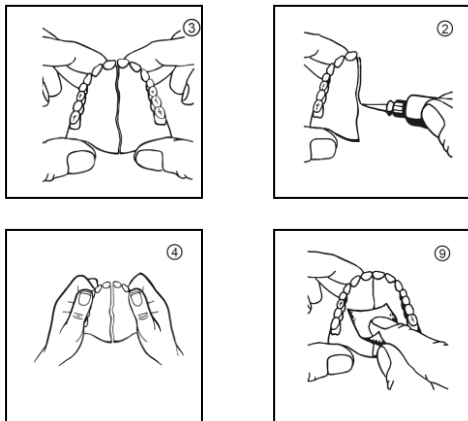
**Contents**

3 Easy mix Superfix pouches, 1 tube Superfix adhesive, 2 Sheet emery paper

**Instructions**

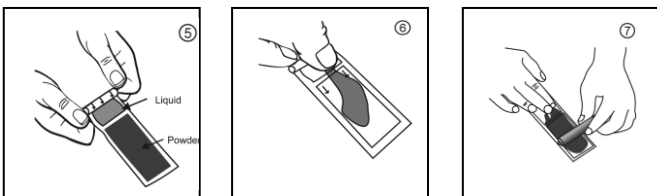
**Denture preparation**

1. Make sure the denture pieces have been cleaned and are completely dry. Use alcohol swabs to remove stubborn residue and any old adhesive.
2. Join the pieces together making sure no piece is missing.
3. Add a thin layer of glue along the whole cracked edge of one part of the denture.
4. Carefully hold together the two pieces of the denture, so that the cracked edges align perfectly.
5. After 20 seconds, wipe away any excess glue leaking out of the crack with a damp cloth on both sides.
- 6 Once you are certain the glue is fixed and dried, place the denture back in the mouth and check fit. The denture should sit perfectly into place (if the denture feels uncomfortable, disassemble the pieces and repeat Steps 2 to 5).
7. Gently rub the emery paper along the crack of the TONGUE SIDE (the eating side) of the denture so forming a channel into which to place the acrylic. Do not rub the emery paper along the gum side of the crack.



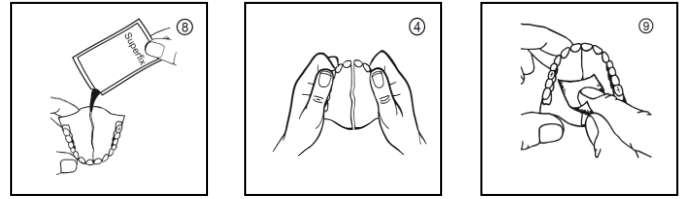
**Mixing Superfix acrylic**

8. Take one pouch of Superfix, and push the clear liquid upto the centre seal towards the pink powder. Press the liquid bubble until the centre seal 'pops' and pushes liquid into the pink powder .
9. Using round rod (or side of round pen) mix together the Superfix liquid and powder by pushing the rod up and down the length of pouch in a stoking fashion until a uniform pink paste is formed. Make sure all the powder is mixed into the liquid.



**Repairing the broken denture**

10. Cut open the Superfix pouch along the centre seal and gently pour a small steady stream of paste onto the crack.
11. After 2 minutes wipe away excess Superfix paste using a damp wipe.
12. Place the repaired denture in hot water for about 30 minutes
13. Using the emery paper smooth off any rough or sharp edges of the cured Superfix acrylic.
14. Clean the repaired denture using your usual denture cleaning agents before placing back in the mouth.



NOTE. Above instructions are for the repair of broken upper and lower dentures. For the refixing of dislodged teeth modify the instructions as follows:

**Tooth preparation**

1. Using the emery paper rub away some of the old hard acrylic in the tooth socket.
2. Place the emery paper on a flat surface and rub the fitting surface of dislodged tooth on it to remove the old hard acrylic.

**Reaffixing a dislodged tooth**

3. Place a small amount of mixed Superfix acrylic in the prepared tooth socket.
4. Press the tooth into the socket making sure it is aligned with adjacent teeth of denture.

Next follow the above step 11. to 14.

**Composition**

Powder - Poly Methyl Methacrylate polymer >98%. CAS No. 9011-14-7

Liquid - Methyl Methacrylate monomer >96%. CAS No. 80-62-6




Adhesive - Ethyl 2-cyanoacrylate 60 -100 %. CAS No. 7085-85-0 60

For fuller information consult Superfix MSDS

**Contraindications**


- Do not use if allergic or sensitive to acrylates
- Do not use to repair flexible dentures
- Superfix acrylic will not bond onto metal frame of cobalt chrome dentures
- Do not use to re-cement natural teeth or loose dental caps
- Do not use to repair 'implant supported dentures'

**Caution**

<p>Adhesive contains ethyl cyanoacrylate</p> <div style="text-align: center;">   <b>IRRITANT</b> </div> <p>Prevent contact with eyes, skin and clothing. Do not breathe vapour and mist. Wash thoroughly after handling. Avoid contact with fabric or paper goods. Contact with these materials may cause rapid polymerization which can generate smoke and strong irritating vapours, and cause thermal burns. UN 3334 - Class 9 - PG 3</p>	<p>Liquid contains Methyl methacrylate monomer</p> <div style="text-align: center;">    <b>IRRITANT FLAMMABLE</b> </div> <p>Liquid in pouch is a stabilized Methyl methacrylate monomer. Highly flammable liquid and vapour. May cause an allergic skin reaction and respiratory irritation. Keep away from heat, hot surfaces, sparks, open flames and other ignition sources. No smoking. UN1247 - Class 3 - PG2</p>
--	--

**Storage**

Store in its original package away from children.


**GAP Research Co. Ltd., Unit 2 Ebbsfleet Ind. Est.,**  
 Stonebridge Rd., Northfleet, Kent. DA11 9DZ UK  
 GTIN 5031966000051



Issue 3.11.2017